

1. Write two examples of each of the following kinds of function.

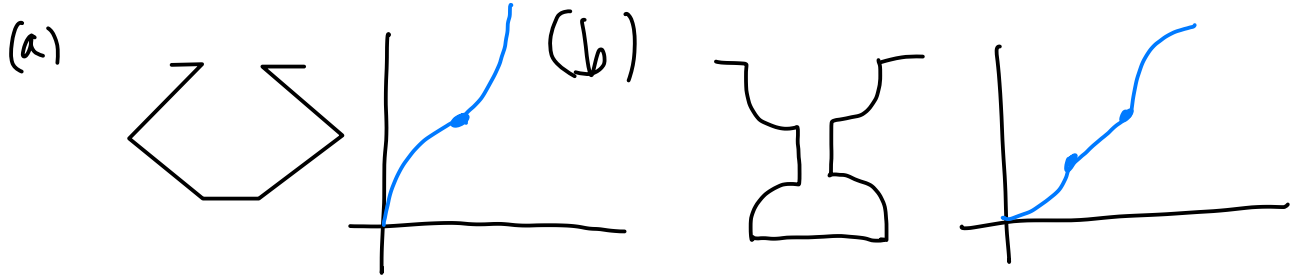
(a) linear $5x + 1, -2x + 3$

(b) quadratic $x^2 + 1, 4x^2 - x$

(c) absolute value $|x + 2|, |x| - 5$

(d) polynomial $x^3 + 2x - 1, x^4 - 2x$

2. Sketch calibration functions for the following bottles:



3. Sketch $f(g(x))$ and $g(f(x))$ where $f(x) = x^2 - 3$ and $g(x) = x^2 - x - 2$.

